
Library of Congress Subject Headings

Module 7.4
Evaluating Headings Assigned to Resources 2:
The Economic Effect of Maori Whaling

Policy, Training, and Cooperative Programs Division
Library of Congress
August 2019

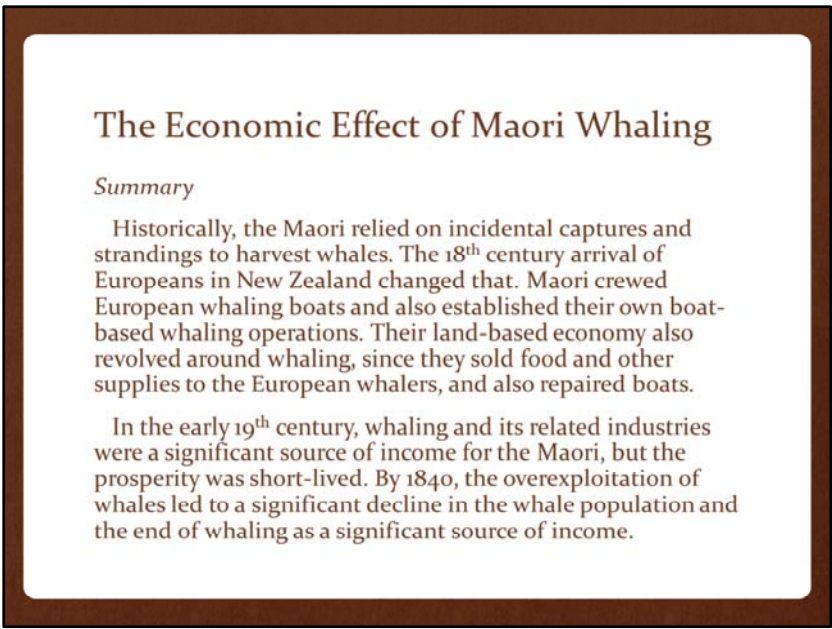
Intent of the This Module

- To demonstrate
 - The process for determining whether the assigned headings are appropriate for the resource
 - The technique for ensuring that the main heading and subdivisions are valid and combined correctly
 - The correct order of subject headings

As in the previous module, we will demonstrate the thought process used in determining whether each heading assigned to a resource is appropriate for it.

If it is, we will correct the headings themselves as necessary to ensure that the main heading and subdivisions are combined correctly.

Finally, we will review the corrected headings to determine if they should be rearranged so that the heading that represents the predominant topic is assigned as the first heading.



The resource whose headings we will be reviewing in this module is *The Economic Effect of Maori Whaling*. The summary on the cover states,

Historically, the Maori relied on incidental captures and strandings to harvest whales. The 18th century arrival of Europeans in New Zealand changed that. Maori crewed European whaling boats and also established their own boat-based whaling operations. Their land-based economy also revolved around whaling, since they sold food and other supplies to the European whalers, and also repaired boats.

In the early 19th century, whaling and its related industries were a significant source of income for the Maori, but the prosperity was short-lived. By 1840, the overexploitation of whales led to a significant decline in the whale population and the end of whaling as a significant source of income.

The Economic Effect of Maori Whaling

Summary

Historically, the Maori relied on incidental captures and strandings to harvest whales. The 18th century arrival of Europeans in New Zealand changed that. Maori crewed European whaling boats and also established their own boat-based whaling operations. Their land-based economy also revolved around whaling, since they sold food and other supplies to the European whalers, and also repaired boats.

In the early 19th century, whaling and its related industries were a significant source of income for the Maori, but the prosperity was short-lived. By 1840, the overexploitation of whales led to a significant decline in the whale population and the end of whaling as a significant source of income.

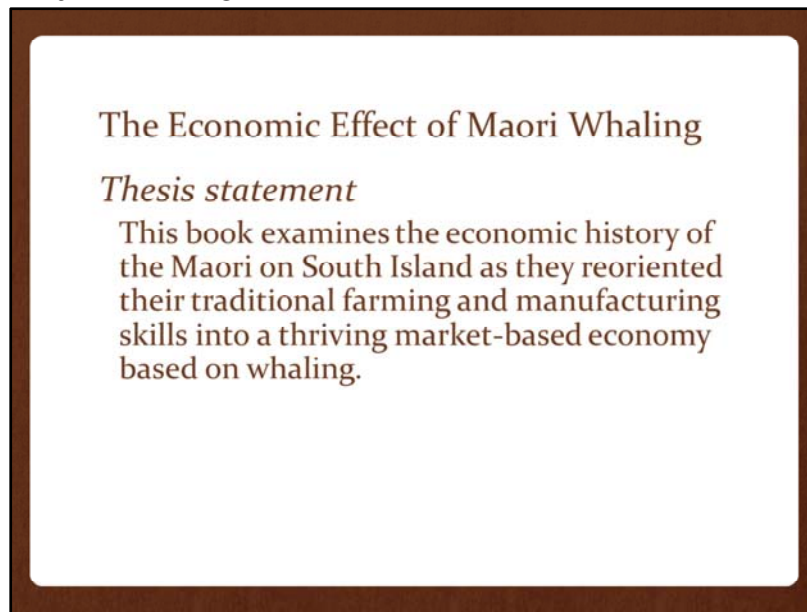
The summary includes important key words and phrases, which we have highlighted in a different color and underlined on the slide.

They are:

- economics;
- Maori;
- whaling;
- crewed European whaling boats;
- established their own boat-based whaling operations;
- sold food and other supplies;
- 19th century; and
- prosperity.

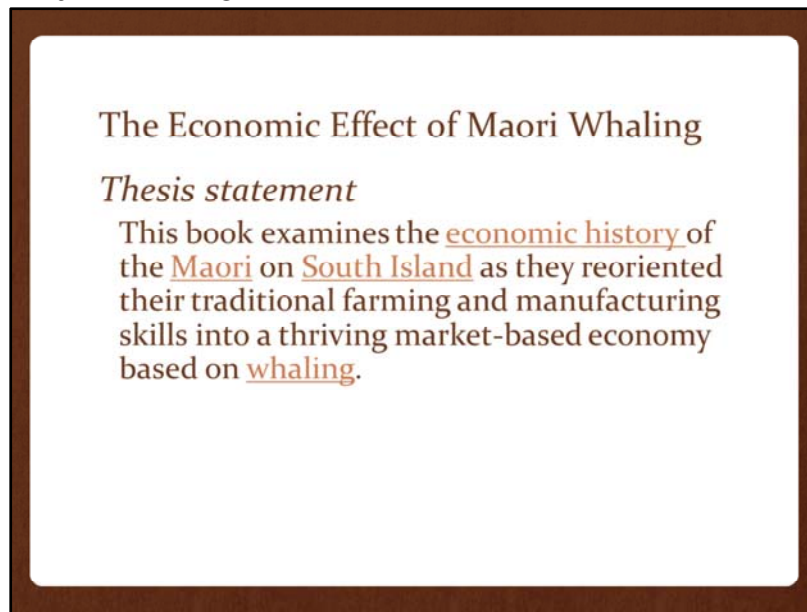
The summary appears to give us a good understanding of the intent of the resource, which is to explain how the economic history of the Maori shifted dramatically after the European whalers arrived.

Now let's look at the thesis statement.



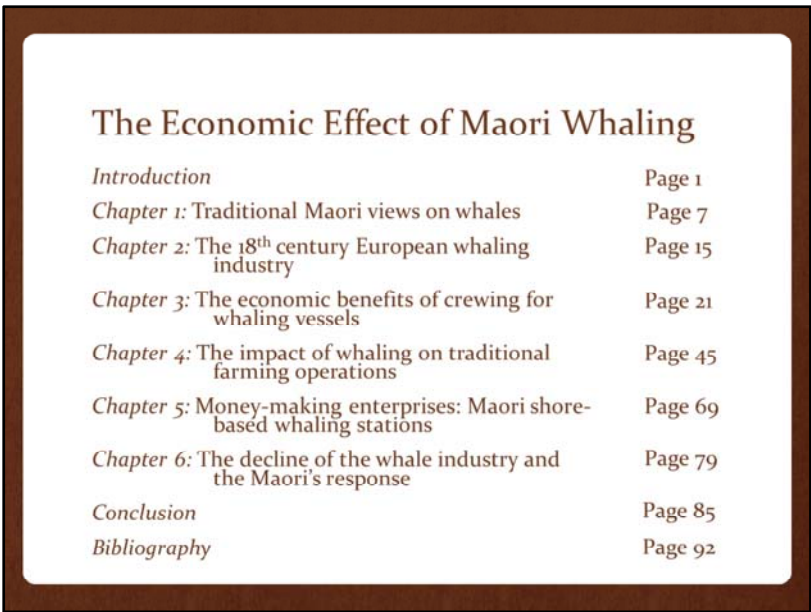
It reads,

This book examines the economic history of the Maori on South Island as they reoriented their traditional farming and manufacturing skills into a thriving market-based economy based on whaling.



We have again highlighted the important words and phrases:

economic history;
Maori;
South Island; and
whaling.

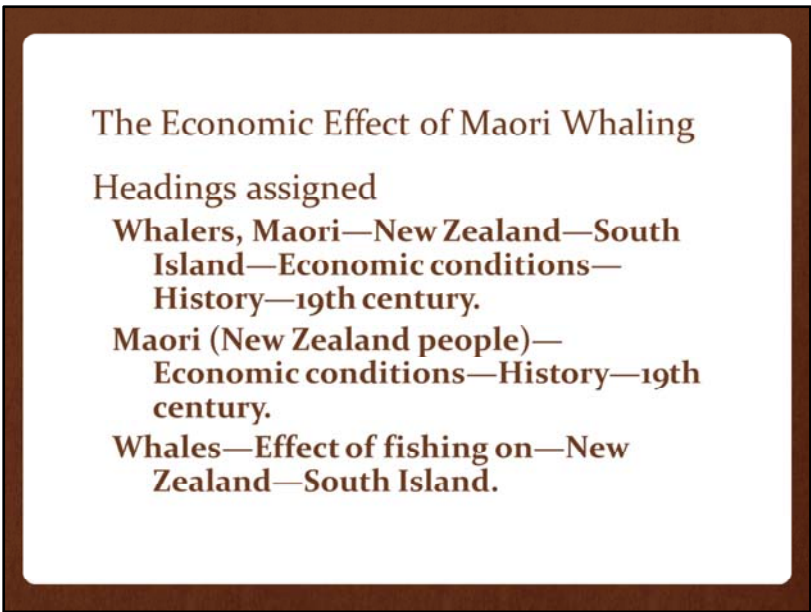


The Economic Effect of Maori Whaling

<i>Introduction</i>	Page 1
<i>Chapter 1: Traditional Maori views on whales</i>	Page 7
<i>Chapter 2: The 18th century European whaling industry</i>	Page 15
<i>Chapter 3: The economic benefits of crewing for whaling vessels</i>	Page 21
<i>Chapter 4: The impact of whaling on traditional farming operations</i>	Page 45
<i>Chapter 5: Money-making enterprises: Maori shore-based whaling stations</i>	Page 69
<i>Chapter 6: The decline of the whale industry and the Maori's response</i>	Page 79
<i>Conclusion</i>	Page 85
<i>Bibliography</i>	Page 92

Here we can see the table of contents for the resource.

From it, we can get a sense of the topics addressed and the amount of space dedicated to those topics in the resource itself.



These are the subject headings that were assigned to the resource.

Whalers, Maori—New Zealand—South Island—Economic conditions—History—19th century.

Maori (New Zealand people)—Economic conditions—History—19th century.

Whales—Effect of fishing on—New Zealand—South Island.

Are they appropriate for the resource, and are they formulated properly, if so?

We will examine them one at a time.

The Economic Effect of Maori Whaling

Headings assigned

Whalers, Maori—New Zealand—South Island—Economic conditions—History—19th century.

Maori (New Zealand people)—Economic conditions—History—19th century.

Whales—Effect of fishing on—New Zealand—South Island.

Let's begin with the first heading string:

Whalers, Maori—New Zealand—South Island—Economic conditions—History—19th century.

First, we should check to see if **Whalers, Maori** is an authorized heading in LCSH.

The Economic Effect of Maori Whaling

Whalers, Maori—New Zealand—South Island—Economic conditions—History—19th century.

Whalers, Maori (May Subd Geog)
UF Maori whalers
BT [Whalers \(Persons\)—New Zealand](#)

It is, and it may be subdivided geographically.

We will remember that.

However, it is a good idea to check the geographic subdivision last. Therefore, let's check the first topical subdivision.

The Economic Effect of Maori Whaling

Whalers, Maori—New Zealand—South Island—Economic conditions—History—19th century.

Whalers, Maori (May Subd Geog)

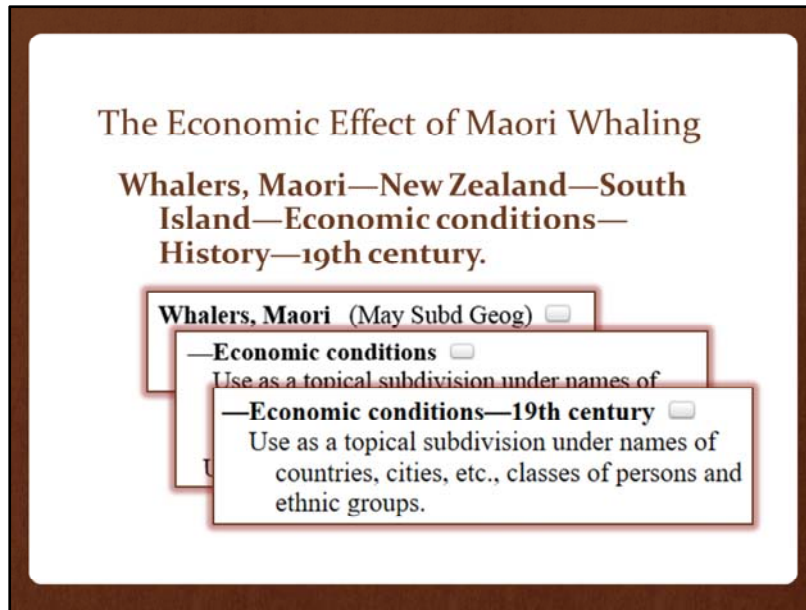
—Economic conditions

Use as a topical subdivision under names of countries, cities, etc., classes of persons, and ethnic groups.

UF —Economic history

By searching the free-floating subdivisions in Classification Web, we find that **—Economic conditions** is established, and it is used as a topical subdivision under names of places, classes of persons, and ethnic groups.

We should also note that it does NOT say May Subd Geog. This means that a geographic subdivision cannot follow it.



If we scroll down the page a bit, we find that **—Economic conditions—19th century** is established, too, and can also be used under names of places, classes of persons, and ethnic groups. The heading that we are evaluating, though, uses **—Economic conditions—History—19th century** instead. Which is it?

The subdivision combination we see in Classification Web also does not indicate that it can be subdivided geographically. We should make note of that.

But before we investigate these issues further, *first*, we must ask ourselves whether **Whalers, Maori**, is a place, class of persons, or an ethnic group. It's quite obvious that this heading does not represent a place!

To find out if it is a class of persons, we need to look at H 1100, the instruction sheet in the SHM for classes of persons. It defines the category.

The Economic Effect of Maori Whaling

Whalers, Maori—New Zealand—South Island—Economic conditions—History—19th century.

From H 1100, Classes of Persons

TYPES OF HEADINGS COVERED: ... subject headings for classes of persons, including age and sex groups; social, economic, and political categories of persons; types of afflicted persons; members of particular religions; employees and occupational groups; etc. *Examples:* **Youth ... Fire fighters; Judges; Darts players....**

H 1100 says that headings for people in particular occupational groups, including those qualified by an ethnic qualifier, are considered to be classes of persons.

Whalers is an occupational group.

If you are unsure whether **Maori** is an ethnic group, you can look in LCSH.

The Economic Effect of Maori Whaling
Whalers, Maori—New Zealand—South Island—Economic conditions—History—19th century.

Maori (New Zealand people) (May Subd Geog)
[\[DU422.8-424\]](#)
UF Indigenous peoples—New Zealand
Maoris [Former heading]
BT [Ethnology—New Zealand](#)
[Polynesians](#)

The heading **Maori (New Zealand people)** has the BT **Ethnology—New Zealand**, indicating that it is indeed an ethnic group.

So we now know that we can use **Whalers, Maori—Economic conditions**, but should we use the subdivision **—History**?

The subdivision **—History—19th century** is free-floating, but so is **—Economic conditions—19th century** without the interposition of **—History**.

The Economic Effect of Maori Whaling
**Whalers, Maori—New Zealand—South
Island—Economic conditions—
History—19th century.**

From H 1578, Economic Conditions

1. General rule. Use the free-floating subdivision –
Economic conditions under names of regions,
countries, cities, etc.; under names of ethnic groups;
and under classes of persons, including occupational
groups, for works discussing the economic history or
economic conditions in general of a place, ethnic
group, or class of persons.

The answer can be found in H 1578, Economic Conditions, sections 1 and 4.

Section 1 confirms that we can use –**Economic conditions** under classes of persons, including occupational groups.

The Economic Effect of Maori Whaling
Whalers, Maori—New Zealand—South Island—Economic conditions—History—19th century.

From H 1578, Economic Conditions

4. Chronological subdivisions. ... When appropriate, further subdivide headings of the type **[class of persons]—Economic conditions** or **[ethnic group]—Economic conditions** by the free-floating century subdivisions listed under **—Economic conditions** in H 1100 and H 1103: **–16th, [17th, 18th, 19th, 20th, or 21st] century.**

Section 4 says that the subdivision **—Economic conditions** can be subdivided by the chronological subdivisions listed in H 1100 and H 1103.

H 1103 is for ethnic groups, but we have already determined that **Whalers, Maori** is a class of persons, so we will look in H 1100.

The Economic Effect of Maori Whaling
Whalers, Maori—New Zealand—South
Island—Economic conditions—
~~History~~—19th century.

<i>sv</i> Early works to 1800	(H 1576)	
<i>sx</i> Economic conditions	(H 1578)	
<i>sx</i> Economic conditions <i>sy</i> 16th century	(H 1578)	
<i>sx</i> Economic conditions <i>sy</i> 17th century	(H 1578)	
<i>sx</i> Economic conditions <i>sy</i> 18th century	(H 1578)	
<i>sx</i> Economic conditions <i>sy</i> 19th century	(H 1578)	
<i>sx</i> Economic conditions <i>sy</i> 20th century	(H 1578)	
<i>sx</i> Economic conditions <i>sy</i> 21st century	(H 1578)	

We find the following subdivisions, none of which include **–History**.

Therefore, the subdivision **–History** needs to be removed from the heading string.

We should use **–Economic conditions—19th century**.

The Economic Effect of Maori Whaling

Whalers, Maori—New Zealand—South Island—Economic conditions—~~History~~—19th century.

Whalers, Maori (May Subd Geog)

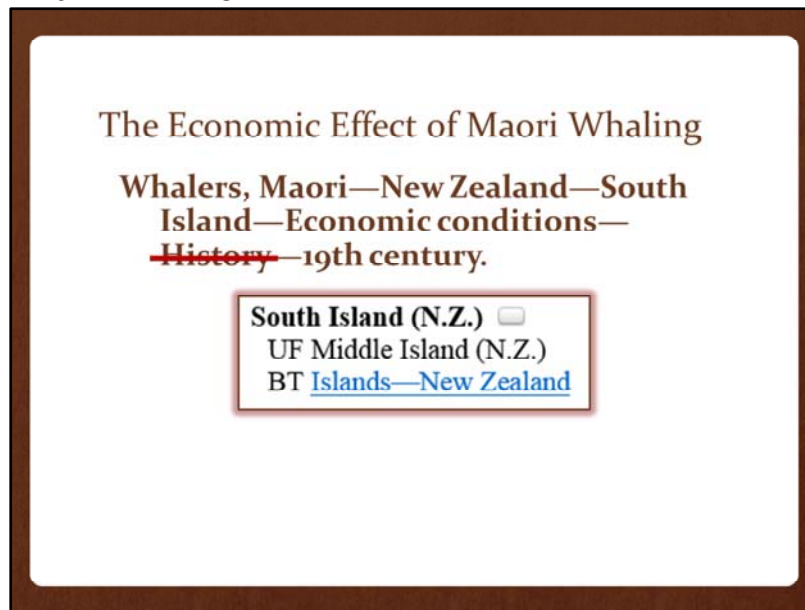
—Economic conditions
Use as a topical subdivision under names of

—Economic conditions—19th century
Use as a topical subdivision under names of countries, cities, etc., classes of persons and ethnic groups.

Our next step is to evaluate the geographic subdivision.

We saw earlier that **Whalers, Maori** can be subdivided geographically.

We also saw that **—Economic conditions** and **—Economic conditions—19th century** cannot be. The only place we can include a geographic subdivision is after the main heading, so the subdivision is in the correct place.



Now we need to look up the heading for New Zealand's South Island, which is established in LCSH.

We cannot use the heading as given, of course, and instead have to convert it to a geographic subdivision.

The Economic Effect of Maori Whaling
Whalers, Maori—New Zealand—South
Island—Economic conditions—
~~History~~—19th century.

South Island (N.Z.)
UF Middle Island (N.Z.)
BT [Islands—New Zealand](#)

781 0 \$z New Zealand \$z South Island

The 781 field in the authority record shows us how to do that.

By comparing the 781 field to the heading string assigned, we can see that the geographic subdivision was properly constructed.

The Economic Effect of Maori Whaling

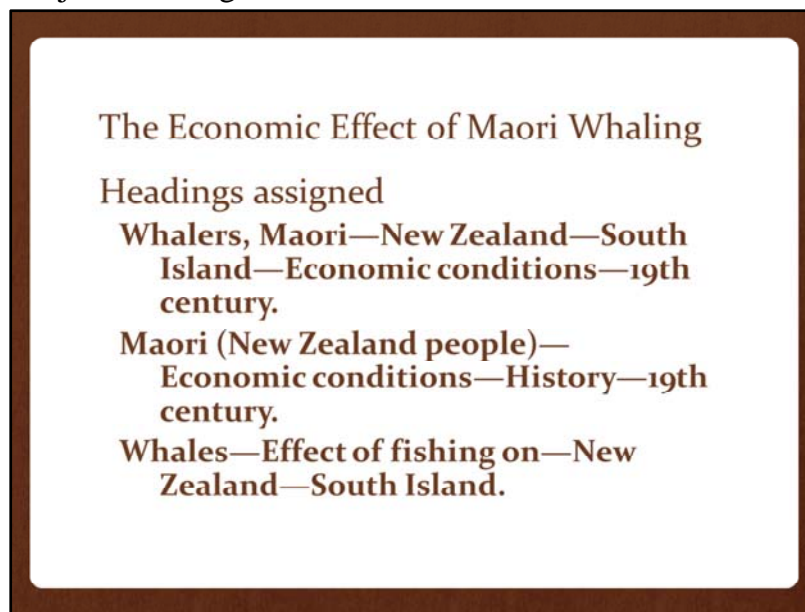
Whalers, Maori—New Zealand—South Island—Economic conditions—~~History~~—19th century.

Whalers, Maori (May Subd Geog)
UF Maori whalers
BT [Whalers \(Persons\)—New Zealand](#)

Whalers, Operation, 2005
USE [Operation Whalers, 2005](#)

Now we will do our final check of LCSH by removing the geographic subdivision and searching **Whalers, Maori—Economic conditions**.

There is no reference in LCSH, so we can assign the string with no worries.



The first heading should be **Whalers, Maori—New Zealand—South Island—Economic conditions—19th century.**

Now let's evaluate the second heading.

The Economic Effect of Maori Whaling

Headings assigned

Whalers, Maori—New Zealand—South Island—Economic conditions—History—19th century.

Maori (New Zealand people)—Economic conditions—History—19th century.

Whales—Effect of fishing on—New Zealand—South Island.

It is **Maori (New Zealand people)—Economic conditions—History—19th century.**

This heading is similar to the first, but has a different focus. It means: the 19th century economic conditions of the Maori in general.

Does that appear to match the resource? Yes, it does.

The resource focuses on the impact that whaling had on the entire Maori population, but for some reason this heading does not include a geographic subdivision.

We have already looked up the main heading and the subdivisions in this heading string, so it should be a relatively simple matter to determine whether it is properly constructed.

The Economic Effect of Maori Whaling

**Maori (New Zealand people)—
Economic conditions—History—19th
century.**

Maori (New Zealand people) (May Subd Geog)
[\[DU422.8-424\]](#)
UF Indigenous peoples—New Zealand
Maoris [Former heading]
BT [Ethnology—New Zealand](#)
[Polynesians](#)

First, the main heading, **Maori (New Zealand people)**, is valid, and we determined earlier that it represents an ethnic group.

The Economic Effect of Maori Whaling

**Maori (New Zealand people)—
Economic conditions—History—19th
century.**

Maori (New Zealand people) (May Subd Geog)

—Economic conditions

U Use as a topical subdivision under names of countries, cities, etc., classes of persons, and ethnic groups.

E UF —Economic history

The subdivision **—Economic conditions** can be used under ethnic groups, so it looks good so far.

But notice that the subdivision **—History** has been used in this heading, just as it was in the first one.

We found out that **—History** cannot be inserted between the subdivisions **—Economic conditions** and **—19th century**.

The Economic Effect of Maori Whaling

**Maori (New Zealand people)—
Economic conditions—~~History~~—19th
century.**

Maori (New Zealand people) (May Subd Geog)

—**Economic conditions**
Use as a topical subdivision under names of

—**Economic conditions—19th century**
Use as a topical subdivision under names of
countries, cities, etc., classes of persons and
ethnic groups.

[No audio]

The Economic Effect of Maori Whaling

**Maori (New Zealand people)—
Economic conditions—~~History~~—19th
century.**

Maori (New Zealand people) (May Subd Geog)

—Economic conditions
Use as a topical subdivision under names of

—Economic conditions—19th century
Use as a topical subdivision under names of
countries, cities, etc., classes of persons and
ethnic groups.

Now let's consider whether there should be a geographic subdivision in this string.

It would have to appear after the main heading and before the topical subdivision, since only the main heading can be subdivided geographically.

The Economic Effect of Maori Whaling

Maori (New Zealand people)—
Economic conditions—~~History~~—19th
century.

Thesis statement
This book examines the economic history of
the Maori on South Island as they reoriented
their traditional farming and manufacturing
skills into a thriving market-based economy
based on whaling.

Recall the thesis statement, which says that the resource focuses on the Maori who live on the South Island.

There should be a geographic subdivision, and we already know how it should be formatted.

The Economic Effect of Maori Whaling

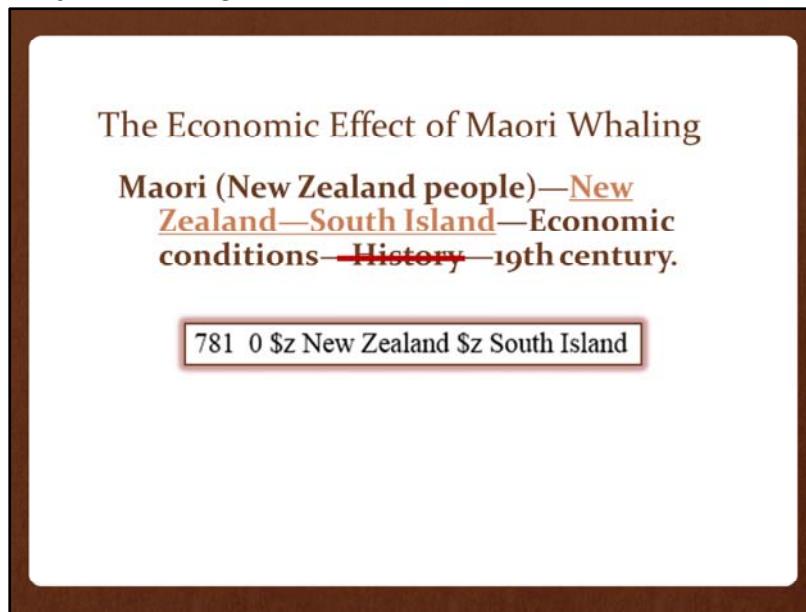
**Maori (New Zealand people)—
Economic conditions—~~History~~—19th
century.**

**Maori (New Zealand people)—Criminal justice
system** (May Subd Geog)
[\[DU423.C8\]](#)
BT [Criminal justice, Administration of—New Zealand](#)
[Maori \(New Zealand people\)—Government relations](#)

**Maori (New Zealand people)—Education
(Elementary)**
NT [Kura kaupapa Māori](#)

We now have to search LCSH to determine whether *Maori (New Zealand people)—Economic conditions* is a USED FOR reference to another heading.

It would come between the two headings on your screen, if so.



The revised heading is **Maori (New Zealand people)—New Zealand—South Island—Economic conditions—19th century.**

By the way, although it looks redundant, it is perfectly fine for the main heading to include the phrase *New Zealand people* and the geographic subdivision to include *New Zealand*. We need to bring out South Island as the geographic focus of the resource, and to do that, we have to interpose *New Zealand*.

The qualifier on the main heading and the geographic subdivision serve different purposes, so they can exist in the same heading string.

The Economic Effect of Maori Whaling

Headings assigned

Whalers, Maori—New Zealand—South Island—Economic conditions—History—19th century.

Maori (New Zealand people)—New Zealand—South Island—Economic conditions—19th century.

Whales—Effect of fishing on—New Zealand—South Island.

Now we have just one more heading to examine: **Whales—Effect of fishing on—New Zealand—South Island.**

Let's turn this heading into a phrase: the effect of fishing on whales on South Island in New Zealand.

Disregarding the fact that whales do not live on islands, which makes the geographic subdivision suspect, there appears to be another problem with this heading.

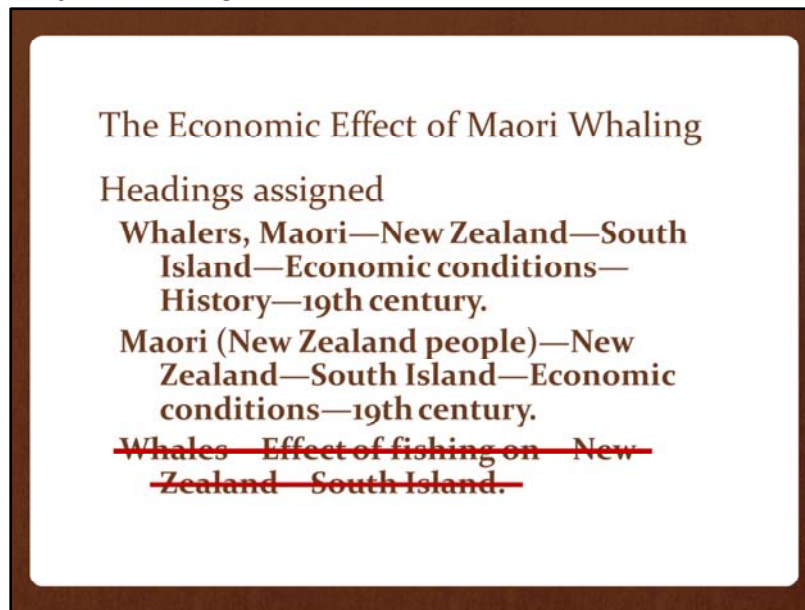
Is the resource *about* the effect of fishing on whales?

The Economic Effect of Maori Whaling	
Whales—Effect of fishing on—New Zealand—South Island.	
<i>Chapter 5: Money-making enterprises: Maori shore-based whaling stations</i>	Page 69
<i>Chapter 6: The decline of the whale industry and the Maori's response</i>	Page 79
<i>Conclusion</i>	Page 85
<i>Bibliography</i>	Page 92

There is a chapter on the decline of the whale industry.

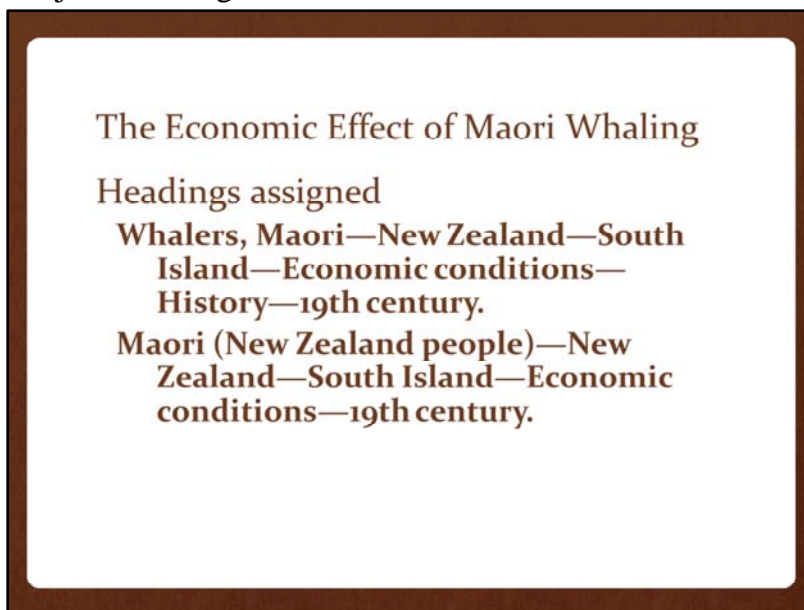
But the focus of this resource is on the way that the decline of the whale industry affected the Maoris. Is it likely to also be on the effect of fishing on whales, which would be more biological or environmental in focus? No. No, it probably would not.

Notice something else: the chapter is five pages long, which would equate to only five percent of this resource, which is approximately 100 pages long. It certainly does not meet the 20 percent threshold.



Therefore, we do not have to review the way the heading is formulated.

We can simply remove it because it is inappropriate for the resource.

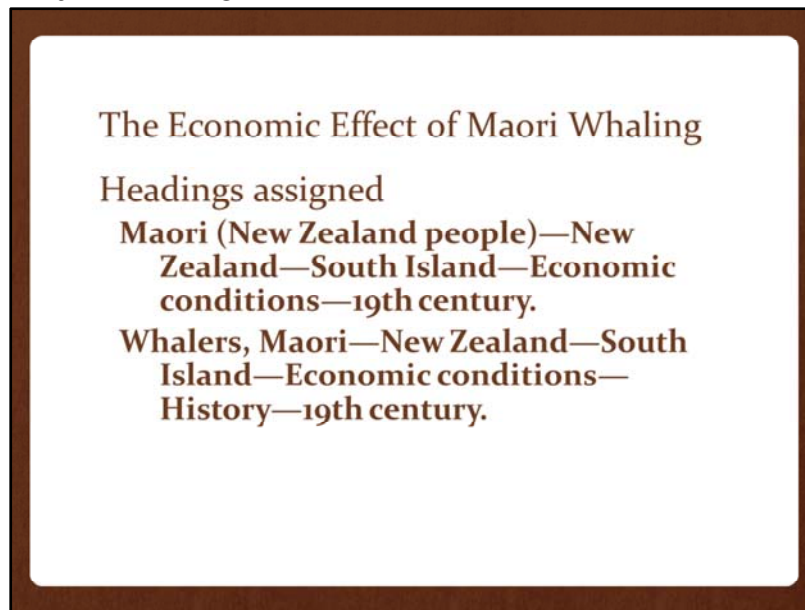


We are left with two correctly formulated subject headings that reflect the contents of the resource.

Our final check is to determine whether the headings are in the correct order. Recall that according to SHM instruction sheet H 80, Order of Subject Headings, the heading that represents the predominant topic of the resource should be assigned as the first heading.

Is the predominant topic the economic conditions of Maori whalers, or is it the economic conditions of the Maori in general, including those who worked as whalers? Based on the table of contents, there is a notable imbalance between the two topics.

If you said resource is primarily about the Maori in general, you were correct. The headings should be reversed.



The headings are now intellectually appropriate for the resource, formulated correctly, and assigned in the correct order.